

SonoScape

P9 Elite

Embrace Everyday
with Efficiency



SonoScape

SonoScape Medical Corp.

2F, 12th Building, Shenzhen Software Park Phase II, Keji Middle 2nd Road,
Nanshan District, Shenzhen 518057, Guangdong, China
Tel: +86-755-26722890 Fax: +86-755-26722850
Email: market@sonoscape.net www.sonoscape.com

© 2022 SonoScape Medical Corp.
All rights are reserved.

SonoScape Medical reserves the right to change the above
information and discontinue any product at any time
without prior notification and will not be liable for any
consequences resulting from the use of this publication.

U-P9E20221021



Ergonomics and mobile-friendly, P9 Elite smoothes each examination steps. Addressing women's lifelong health, SonoScape P9 Elite carefully considers clinical demands, providing a user-friendly platform and 3D rendering images that better assists with the finding of physical issues and healthcare needs.

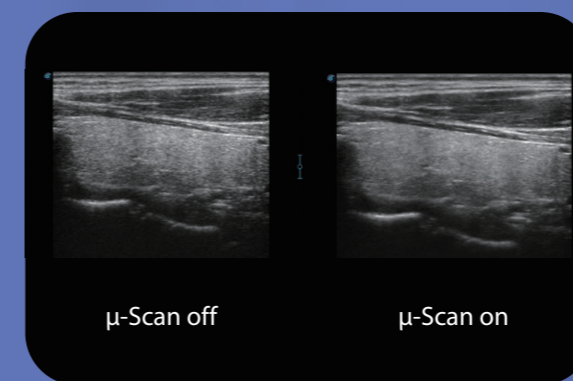


Extraordinary Image Technologies

With the outstanding clear view provided by SonoScape's advanced imaging technologies and optimized transducers, you can make clinical decisions with greater confidence.

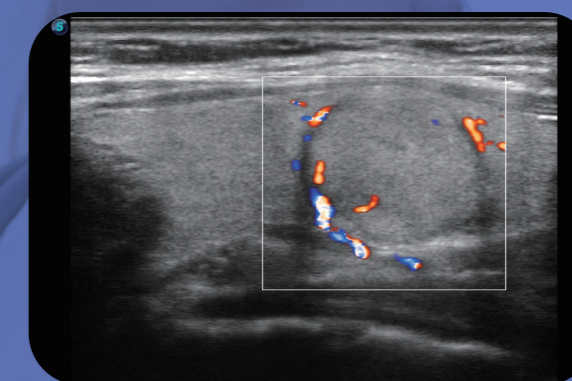
μ-Scan

The new generation μ-Scan imaging technology greatly improves the visibility of organs and lesions. The high-definition contrast resolution will suppress speckle artifacts while maintaining real tissue architecture.



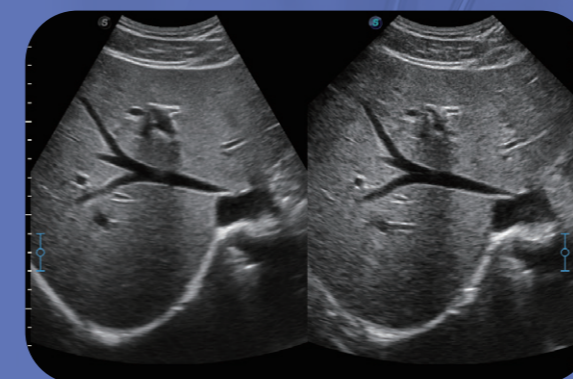
SR Flow

As a new innovative technology, SR Flow improves the capability of detecting low velocity flow signals. It also improves on spatial resolution and overcomes overflow to present users with real hemodynamic information.



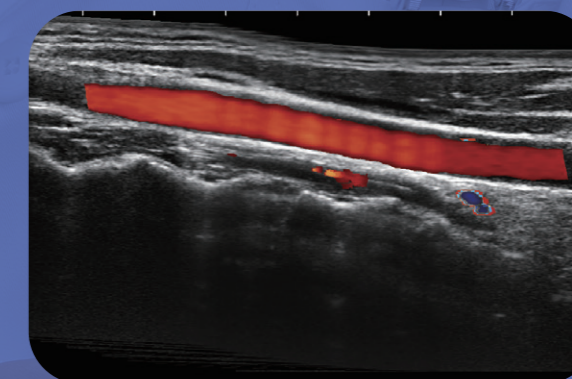
WideScan

With WideScan, the ultrasound image can be enlarged when performing a real time scan by using linear or convex probes, for a more complete view of large lesions or anatomic structures.



Real-time Color Panoramic

With the combination of color flow and real-time panoramic, visualizing the blood flow of an entire vein or artery is now an easy task. Accomplished in real-time for the convenience of the sonographers, any mistake can also be easily back tracked and corrected without interrupting the scan.



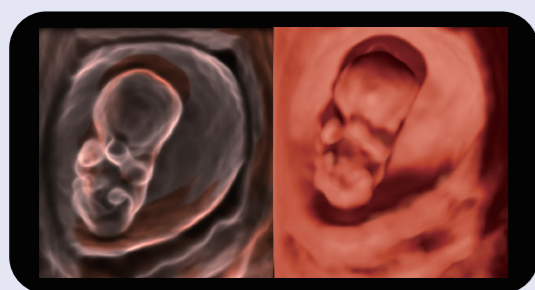
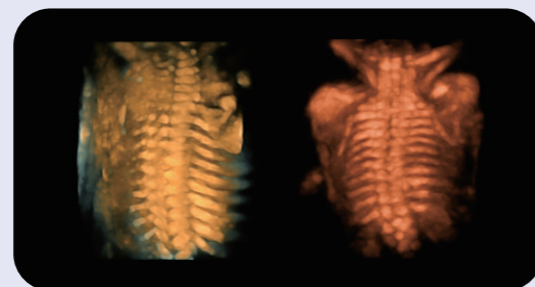


Powerful Obstetrics Application, which provides dedicated 3D/4D women care from the prenatal exams to the pregnancy check.



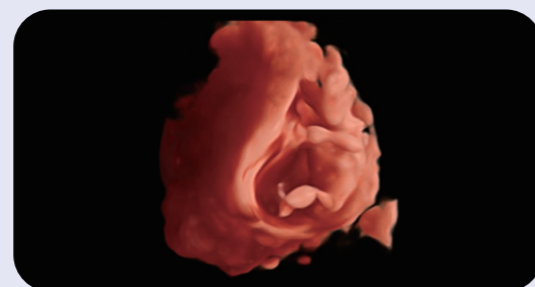
Outstanding 3D/4D Imaging Quality

Outstanding image quality in 3D/4D leads to the best visualization of the fetus, which can provide numerous messages for doctors. This strength is really ideal for the obstetric department. Besides, with abundant application solutions, the doctor can ensure satisfaction of requirements from both the pregnant mother and doctor themselves.



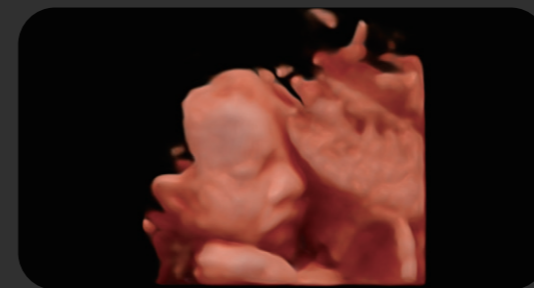
S-Live Silhouette

Through the application of a virtual light source and shadowing effect, S-Live Silhouette sees through the surface and clearly delineates the outlines of bone, organs, cavities, vessel walls and other internal structures. It is a beneficial tool for identifying normal anatomy and diagnosing complex congenital malformations.



S-Live

S-Live offers a movable virtual light source to add more lifelike rendering to the surface for a more realistic appearance of natural shadows and skin texture.



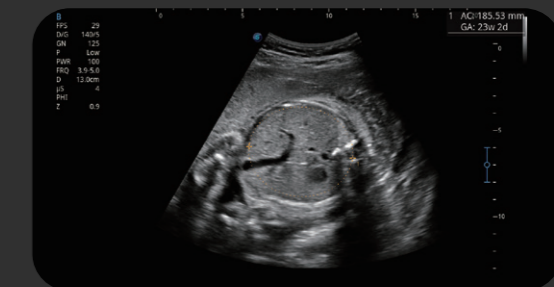
Auto Face

3D fetal face visualization is significant for face anomalies diagnosis. The removal of occlusions and artifacts, such as cord, placenta, uterus and extremities, can be simply accomplished by Auto Face to get an optimal view of fetal face.



Auto OB

Less keystroke required while achieving more sensitive and advanced automated common fetal biometry.

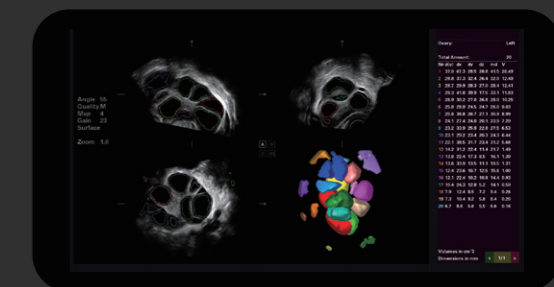


Auto NT

Auto NT helps doctors quickly calculate nuchal translucency thickness and maximizes accuracy compared to manual measurements.

AVC-Follicle

High efficiency of follicle analysis is achieved by AVC Follicle, a volume-data based automatic follicular calculation including the number and volume. Follicles are sorted by sizes in the results and rendered in different colors for better visualization.



User-friendly Design



21.5-inch LED monitor



13.3-inch tilting touch screen



Detachable large capacity battery



Multi-stage temperature control gel warmer



Sliding keyboard



User Interaction with Care

Sono-Help

An inspiring tutorial displaying probe placement, anatomy illustration and standard ultrasound image examples. As a useful reference less experienced clinicians could rely on, Sono-Help covers a variety of applications including liver, kidney, cardiac, breast, thyroid, obstetrics, vascular, etc.

Sono-Drop

Sono-Drop allows wireless connection between P9 Elite and smart phones where ultrasound images can be shared to patients and their families.

Sono-Synch

Real-time interface and camera sharing, enabled by Sono-Synch, makes it possible to connect two ultrasounds in a remote distance and perform remote medical consultation and tutorial.